

## **NISHTHA 2.0 (Secondary Level) Monthly Course Completion Report**

### **1. Introduction**

NISHTHASEC was launched on 2<sup>nd</sup> August, 2021 by the Director of School Education, SPD, Samagra Shiksha in the presence of the dignitaries and nearly 220 teachers from all the four regions namely Pondicherry, Karaikal, Mahe and Yanam.

The Dignitaries present were all the Inspecting Officials who also monitor course progress and motivate the teacher now and then.

The importance of the course was stressed and the message that every teacher and School heads need to undergo 50 hours cpd was emphasized.

The Trained Graduate Teachers handling classes at the secondary were motivated and requested to register/ enroll themselves with department id within 25<sup>th</sup> of August 2021. They were also made aware to go through the course in their own pace and could attempt the quiz only thrice. On getting 70%+ they will get the certificate. They were also cautioned to click the course beginning with "PY". QR codes for the modules were generated and pinned in the Telegram app.

The help desk numbers and the list of persons to whom they should contact when they face any issues were disseminated .

### **2. Schedule**

<b>1-31 August, 2021</b>	Generic Course 1 - Curriculum and Inclusive Education  Generic Course 2 - Integration of ICT in Teaching, Learning and Assessment  Generic Course 3 - Developing Personal-Social Qualities for Facilitating Holistic Development of Learners
----------------------------------	--

--	--

### 3. Modality

Describe the modality in which the program is being implemented.  
Can add points covering the following aspects

#### a. Orientation

The teachers were oriented about the course through official circulars, digital banners, whatsapp messages and through pinned messages in Telegam. They also have their own Whatsapp group where they discuss regarding NISHHA and small issues they face; they sort ways for the issues they face themselves and share with others who may face similar problems.

Most of the TGTs have well oriented with diksha app and online cpd courses as they have undergone NISHTHA1.0 and other cpd courses offered by SCERT, Tamil Nadu.

#### b. Development of courses

Courses, blog instruction videos developed by NCERT in English was adapted, copied in the state tenant as per the guidelines given in sop of implementation of NISHTHA2.0. The courses are excellent, orienting and updating the teachers. However our technical coordinators feels that the resources could be sent even earlier, so that the course content could be stitched earlier and kept ready and could be opened on the scheduled date.

#### Implementation strategy

All teachers employed in government schools are given unique **email id** by the Directorate of School Education. Through official circulars and poster the launch of the NISHTHA2.0 was disseminated to the schools. Even circulars were sent to private and private aided schools.

The name list of the target teachers were collected beforehand from the Inspecting Officers and the teacher were made aware they are to undergo NISHTHA2.0 from the month of July2021.

After the launch the teacher got them enrolled and started pursuing the courses. The maximum three attempts and mark delimitation was the block for few teachers. Many of them rang up and asked for redoing the course. However they were convinced to pursue other modules and later on they could complete the courses where they could not get their certificate.

c. Communication system

WE communicate with the teachers through technical coordinators appointed District wise. State Diksha team to attend call made by the teachers, School Heads, solve the issues posed by them. We also recommend them to do the course in the laptop /desktop. Telegram app is the official mode of communication with the teachers and school heads. Live sessions by NRGs and the link of the play list of the live sessions communicated to teachers through telegram.

d. Monitoring and reporting system

Technical coordinators appointed district wise are in continuous contact with the teachers, helping them complete the course successfully. They report to the concerned Inspecting officer and to the state Diksha Team. The School heads also closely monitor the progress of their teachers and motivate them. District wise reports are received from the District Heads (IOs – CEO, Dy.Directors,JD )

e. Additional activities

No additional activities

f. Any other aspects are taken up by states

NIL

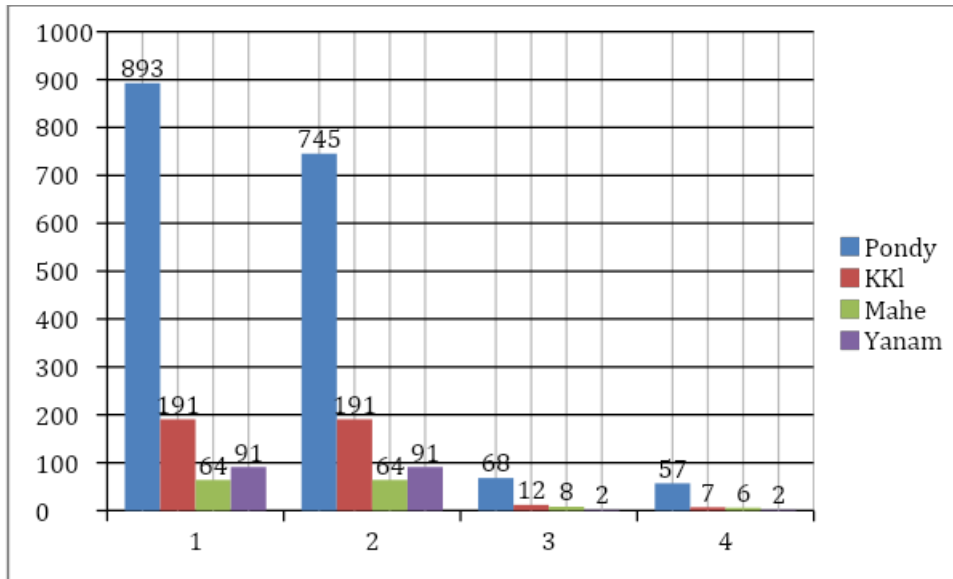
4. Data analysis and interpretation (Data table supported with graphs and interpretations)

a. Total target vs total achievement (no of teachers and schools heads)

District	Teachers		Admin	
	Target	Enrolled	Target	Enrolled
Pondy	893	745	68	57
KKI	191	191	12	7
Mahe	64	64	8	6
Yanam	91	91	2	2

(This figure is arrived after deleting registration of the course from states other than UT of Puducherry)

In Pondicherry 83% of teachers have themselves enrolled, in karaikal , Mahe and Yanam it is 100%



b. District wise analysis - enrolment, completion, and certification (No of teachers and school heads)

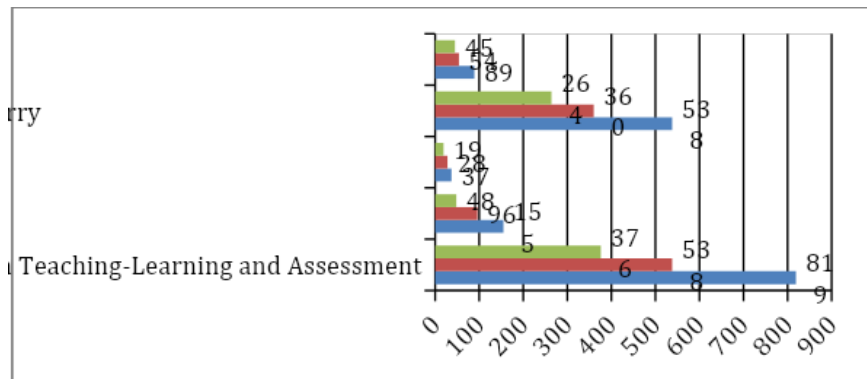
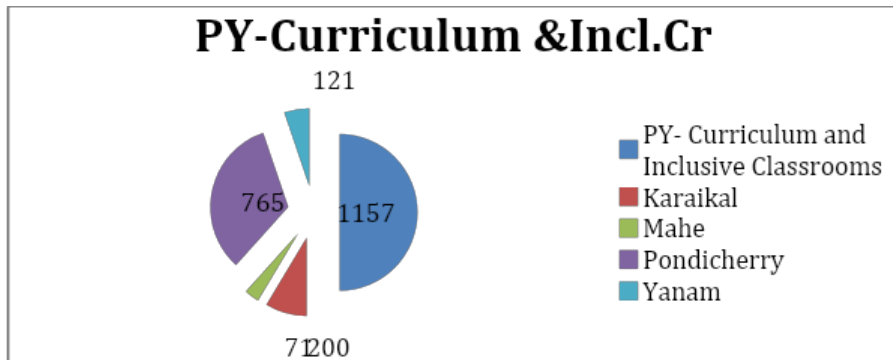
<b>COURSE NAME</b>	<b>Total Enrolments</b>	<b>Total Completions</b>	<b>Total Certificates Issued</b>
<b>PY- Curriculum and Inclusive Classrooms</b>	<b><u>1157</u></b>	<b><u>828</u></b>	<b><u>454</u></b>
Karaikal	<b>200</b>	<b>144</b>	<b>61</b>
Mahe	<b>71</b>	<b>52</b>	<b>25</b>
Pondicherry	<b>765</b>	<b>540</b>	<b>312</b>
Yanam	<b>121</b>	<b>92</b>	<b>56</b>
<b>PY- ICT in Teaching-Learning and Assessment</b>	<b><u>819</u></b>	<b><u>538</u></b>	<b><u>376</u></b>
Karaikal	<b>155</b>	<b>96</b>	<b>48</b>
Mahe	<b>37</b>	<b>28</b>	<b>19</b>
Pondicherry	<b>538</b>	<b>360</b>	<b>264</b>
Yanam	<b>89</b>	<b>54</b>	<b>45</b>
<b>PY- Personal-Social Qualities for Holistic Development</b>	<b><u>892</u></b>	<b><u>617</u></b>	<b><u>344</u></b>
Karaikal	<b>160</b>	<b>109</b>	<b>36</b>
Mahe	<b>53</b>	<b>38</b>	<b>21</b>

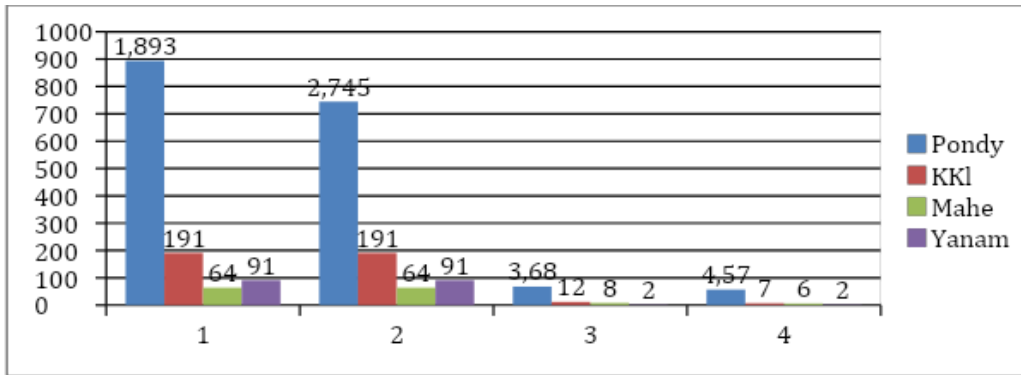
Pondicherry	<b>583</b>	<b>401</b>	<b>239</b>
Yanam	<b>96</b>	<b>69</b>	<b>48</b>
Grand Total	<b>2868</b>	<b>1983</b>	<b>1174</b>

Of the total target the completion rate of teachers district wise is as follows

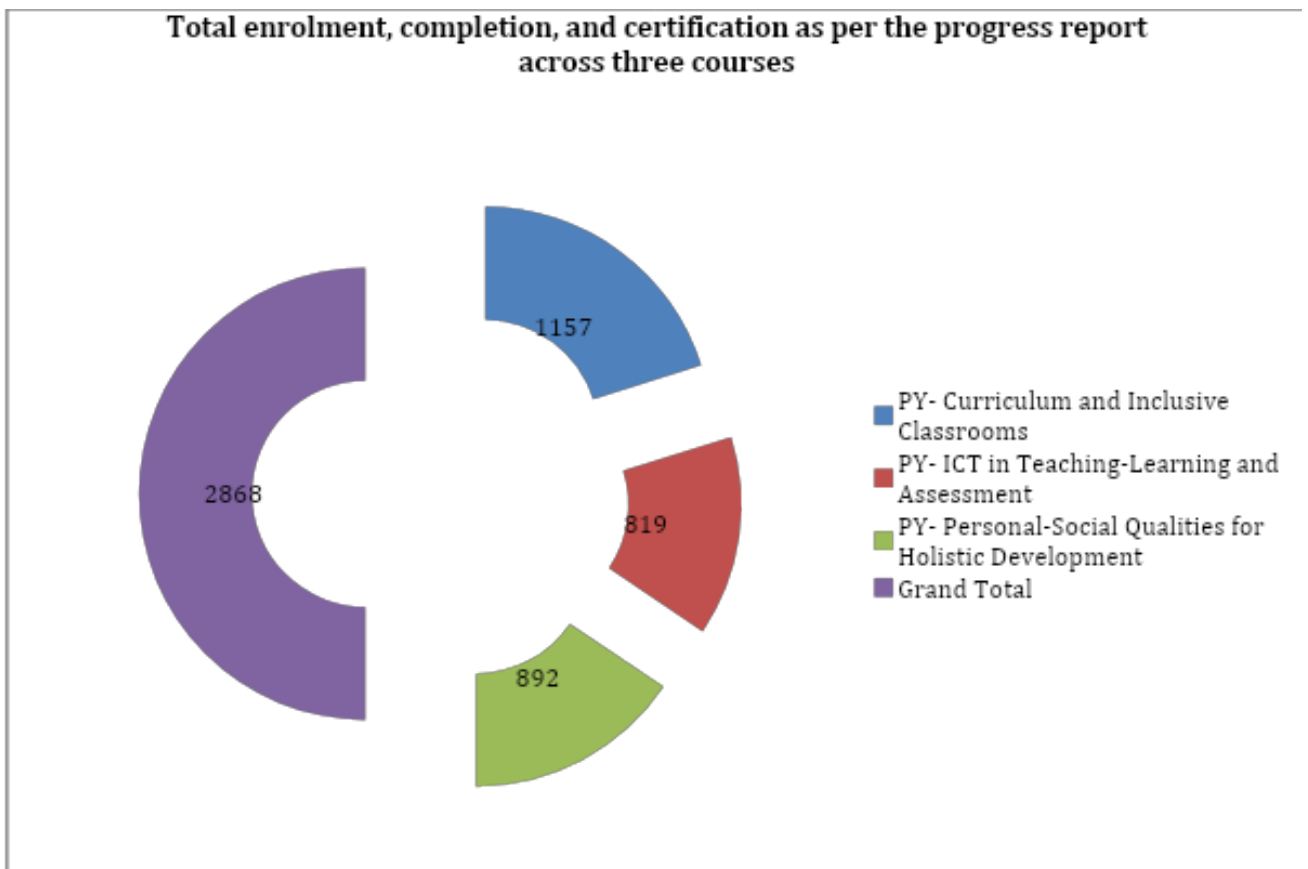
Pondicherry- 71%,karaikal-72%, Mahe- 76 and yanam -76%for module-1

District	Module-1	Module-2	Module-3
Pondicherry	71%	67%	69%
Karaikal	72%	62%	68%
Mahe	76%	76%	71%
Yanam	76%	61	72%

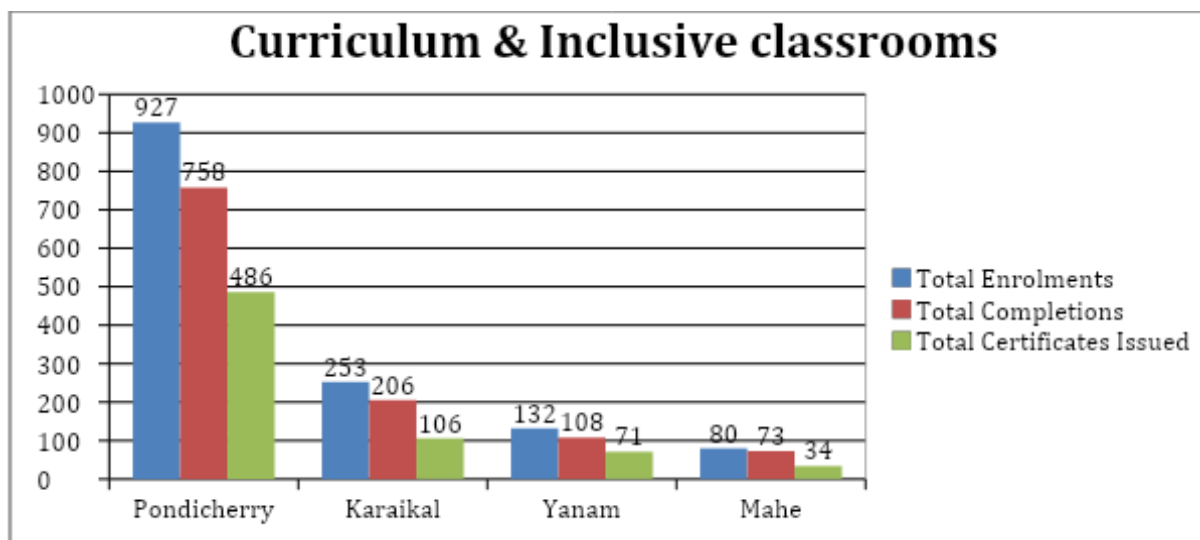




c. Total enrolment, completion, and certification as per the progress report across three courses

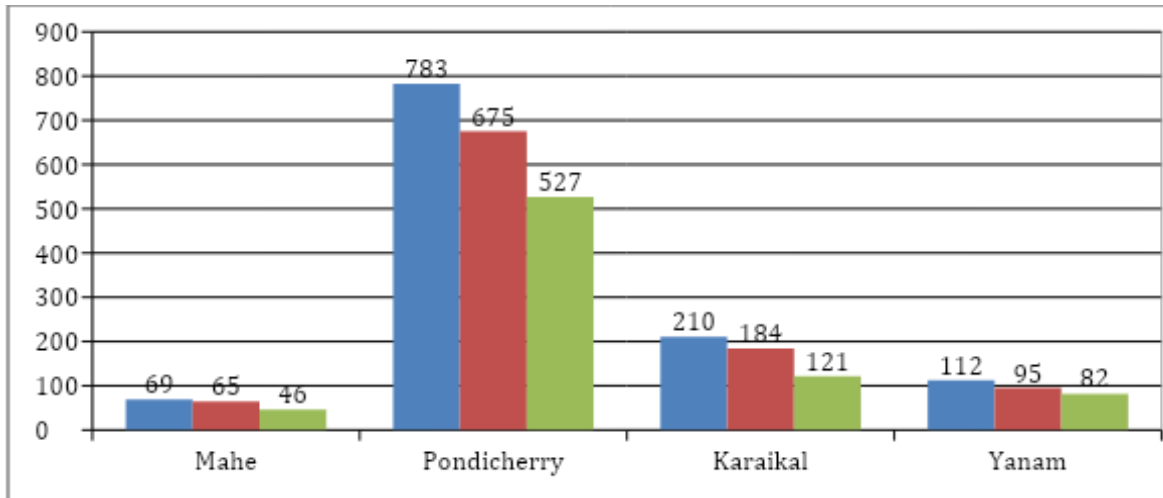


d. Course wise analysis - enrolment, completion, and certification as per progress report excluding users of other states/ UTs/ boards

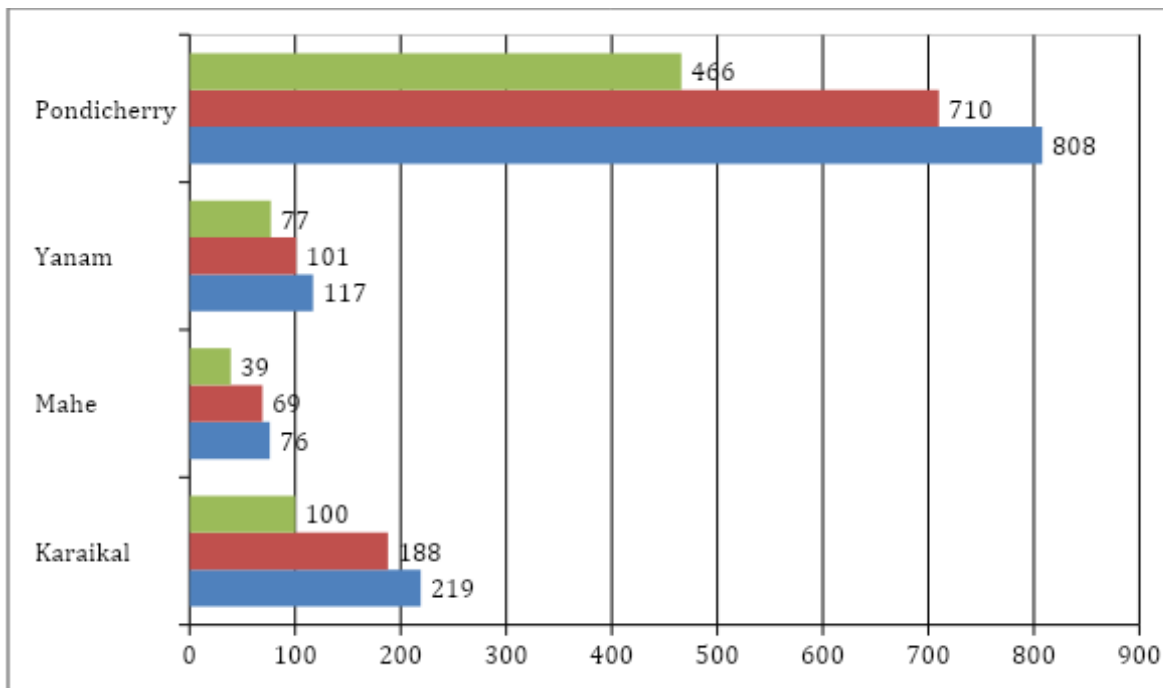


<b>User District</b>	<b>Total Enrolments</b>	<b>Total Completions</b>	<b>Total Certificate s Issued</b>
Pondicherry	927	758	486
Karaikal	253	206	106
Yanam	132	108	71
Mahe	80	73	34

**PY-ICT in Teaching -Learning and Assessment**



## PY-Personal-Social Qualities for Holistic Development

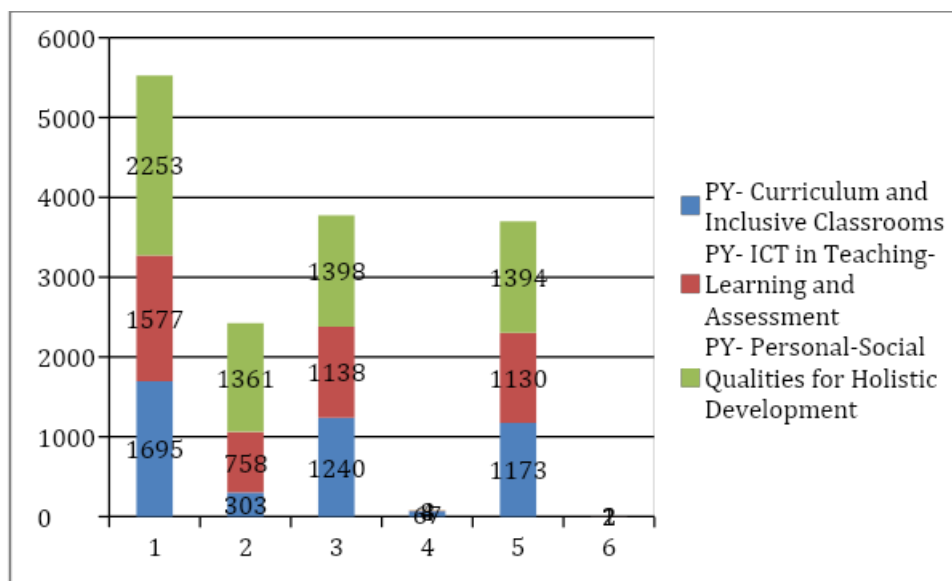


e. Course wise analysis - enrolment, completion, and certification as per progress report excluding users of other states/ UTs/ boards

courses	Total enrolment	Other state	Total completion	Other state	Certification issued	Other state



PY- Curriculum and Inclusive Classrooms	169 5	303	1240	67	1173	2
PY- ICT in Teaching-Learning and Assessment	157 7	758	1138	8	1130	2
PY- Personal-Social Qualities for Holistic Development	225 3	1361	1398	4	1394	1



f. Course wise analysis - No of teachers unenrolled after enrolment date was closed

NIL

g. Course wise analysis - No of certificates issued to learners who scored less than 70% in the assessment

NIL

#### **h. Trends in enrolments**

##### **i. No of enrolment in first 10 days, 11-20 days, 21-25 days and comparison across courses**

i. Number of enrolment in the first two weeks were ore and it gradually decreased in third and fourth week

##### **i. No of enrolments in weekends and comparison with weekdays**

No significant difference in enrolment and completion in weekdays and weekend days so far as the teachers ttended schools on rotation basis. Schools at secondary level started from Septemebr 1,2021 onwards. My in

the next phase a significant difference could be seen.

**j. <any other interesting and meaningful analysis at state level can be added>**

### 5. Issues and Challenges

a. Course content

Course Title	Issues	Status (Resolved/ Unresolved)	Remarks (If resolved how it was resolved)
	nil	nil	nil

b. Technical

S.No	Issues	Status (Resolved/ Unresolved)	Remarks (If resolved how it was resolved)
	nil	nil	nil

c. Any other

S.No	Issues	Status (Resolved/ Unresolved)	Remarks (If resolved how it was resolved)
	nil	nil	nil

6. Best Practices

NIL

7. Key Learnings

DATA ANALYSIS to be further focused and tuned by Puducherry team.

8. Suggestions

NIL

9. Conclusion

The programme requires collaborative efforts and team work

10. Annexures NIL